



**HAGLEY CATHOLIC
HIGH SCHOOL**
SEMPER FIDELIS

“You are my Son the Beloved; my favour rests on him.” Mark 1:11

Friday, 07 January 2022

Dear parent(s)/carer(s) and students

Happy new year to you all, I do hope that you have had a lovely Christmas and enjoyed some time with family and friends

It has been a very busy first week back in school, not least on Tuesday running the ATS again but thank you to everyone who gave consent and sent their child in for testing but also to everyone who tested at home and forwarded their result too.



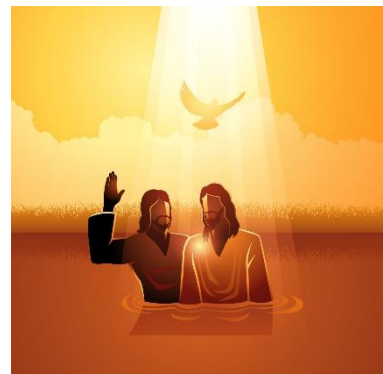
This week was also the Feast of the Epiphany when we, The Church, celebrate the visit of the Magi who were guided by the star of Bethlehem to adore the Lord, bringing their gifts of gold for a king, incense for God and myrrh in symbol of his sacrifice.

During this year, may we too search for Christ amidst the noise of this world, offer ourselves in worship and reveal the light of Christ to others.

This Sunday marks the end of the Liturgical Season of Christmas as we celebrate the Feast of the Baptism of the Lord. The Baptism of the Lord is notable because it marks the beginning of Jesus' ministry and confirms his identity as the Son of God.

As we reflect on Christ's baptism, we are reminded of our own baptism. Pope Benedict XVI said on the Feast of the Baptism of Our Lord:

“[Baptism] is communion with the One who conquered death and holds in his hand the keys of life. Belonging to this circle, to God's family, means being in communion with Christ, who is life and gives eternal love beyond death.”



Attitude to Learning Descriptors

We have amended our attitude to learning descriptors and these will be what you will see on all future student reports. On the next page you can see the new descriptors of Exceptional, Expected, Developing and Below Expectation. Each strand is aligned with our POWERful culture, ethos and narrative and reflects the type of learners we strive to develop and challenge the children to be.

Hagley Catholic High School
Brake Lane, Hagley,
Worcestershire, DY8 2XL

Tel: 01562 883 193
www.hagleyrc.worcs.sch.uk
Principal: Mr J Hodgson

Part of the Emmaus Catholic Multi Academy Company

Private Limited Company of Charitable Status within the Archdiocese of Birmingham
Registered in England and Wales Company No 09174154



Exceptional	Expected
<p>Positive – Asks high quality questions, consistently works hard with a smile, always arrives on time</p> <p>Organisation – Always bring all equipment, completes all homework to an exceptional standard, is always prepared for learning</p> <p>Willing – Always attentive and ready to learn, consistently follows instructions, completes all activities to a high standard, always engaged in learning</p> <p>Effective – Reflects and improves their work by making detailed corrections, always listens attentively, consistently produces best work</p> <p>Respectful – Has an exceptional pride in learning/work, always follows instructions</p>	<p>Positive – Asks questions, works hard with a smile, arrives on time</p> <p>Organisation – Brings all equipment, completes all homework, is prepared for learning</p> <p>Willing – Attentive and ready to learn, follows instructions, completes all activities, engaged in learning</p> <p>Effective – Reflects and improves their work, listens attentively, produces best work.</p> <p>Respectful – Has pride in learning/work, follows instructions</p>
Developing	Below Expectation
<p>Positive – Asks some questions, works hard with a smile but not consistently, arrives on time on most occasions</p> <p>Organisation – Brings equipment to most lessons, completes most homework, is usually prepared for learning</p> <p>Willing – Is usually attentive and ready to learn, mostly follows instructions, completes most activities that are set, sometimes engaged in learning</p> <p>Effective – Reflects on their work and make some improvements, usually listens, sometimes produces best work.</p> <p>Respectful – Usually has pride in learning/work, usually follows instructions</p>	<p>Positive – Rarely asks questions, rarely works hard with a smile, is often late to lessons</p> <p>Organisation – Brings equipment to some lessons, completes some homework, is sometimes prepared for learning</p> <p>Willing – Is sometimes attentive and ready to learn, often doesn't follow instructions, completes some activities that are set, rarely engaged in learning</p> <p>Effective – Rarely reflects on their work doesn't make improvements, listens sometimes, rarely produces best work.</p> <p>Respectful – Sometimes shows pride in learning/work, often doesn't follow instructions</p>

COVID guidance

From Tuesday 11 January we have new guidance coming in regarding COVID testing. **Confirmatory PCR tests will be temporarily suspended for positive lateral flow device (LFD) test results.** This will mean that anyone who receives a positive LFD test result will be required to self-isolate immediately and will not be required to take a confirmatory PCR test.

A reminder also that if your child tests positive on an LFD they should isolate for 7 days, not 10, as long as on day 6 and 7 they have two negative LFD test results, this would mean they would come out of isolation on day 8. Please note day 1 of isolation is the day after a positive test not the day of a positive test. If they do not have negative tests on days 6 and 7 they must complete the full 10 days and only return if they are free of symptoms of a high temperature and continuous cough.

We do have plenty of LFD test packs in school, if you require some for your child's home testing please ask them to collect from reception. Please also remember that the twice weekly should continue on the suggested days of Sundays and Wednesdays.

Attendance

Attendance at school is always vitally important and it has been affected more in the last 2 years than ever before. But there is no hiding from the impact absence can have on a child's educational outcomes and future opportunities, and so I am urging every parent/carer to do all they can to make sure their child is in school and minor ailments or illnesses, that we wouldn't take a day off work for, are not considered reasons for absence.

In the event of unavoidable absence, including COVID 19, please do remember to call the school number, select option 1 and leave a message for us. **This call should be before 8.45am.** Please ensure you leave your child's name, your relationship to them, their form group and the reason for the absence and when you expect them to return. We will then decide on the authorisation code for this.

If you are calling to advise of a positive COVID result, whether via and LFD or PCR please advise us of the day this test was taken, this will help us to calculate your child's return date.

Arbor

We have migrated over to our new Management Information System this week. A reminder that we will be in touch very soon to introduce parents/carers to our new platform for monitoring attendance, receiving reports, tracking behaviours, monitoring homework and receiving communications. In the meantime, a reminder that you can still track behaviours and homework in Class Charts, and we will continue to communicate via email as usual. However until such time as all parents are transferred to the platform you will not see attendance records.

Y11 and 13 Pre-Public Exams

A reminder that the Spring Wave of Pre-Public Exams (Mocks) are this term and will follow a very similar format to the Autumn Wave. These are extremely important as one of the very last opportunities for students to demonstrate their skills and knowledge under exams conditions before the summer exams, which are still slated to go ahead. Furthermore, in the event of exams being postponed or any other disruption it is performance in such exams that will go a long way to forecasting attainment should we have to as in previous years. The dates for your diaries are below:

Year 11: Monday 14 February to Thursday 3 March (either side of half term)

Year 13: Monday 14 March to Friday 18 March

Timetables and further guidance will come from the Exams Office in due course.

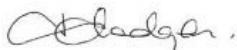
PE Extra Curricular Timetable

At the end of this letter you will find the Extra Curricular PE timetable for this term.

Finally, it leaves me to wish you all a very good weekend.

With every good wish, prayer and blessing

Yours sincerely



Mr J Hodgson
Principal

Key dates:

Thursday 13 th January 2022	Year 11 Online Parents Evening (4.30 - 7.15pm)
Thursday 27 th January 2022	Year 12 Online Parents Evening (4.30 - 7.15pm)
Wednesday 2 nd February 2022	Staff Training Day
Thursday 10 th February 2022	Year 7 Online Parents Evening (4.30 - 7.15pm)
Thursday 17 th February 2022	Hagley Pyramid Concert
Friday 18 th February 2022	Break up for half term

SPORT & PE CLUBS – HALF TERM 3

Lunchtime Sports Clubs					
	Year 7	Year 8	Year 9	Year 10	Year 11
Monday	Badminton club (NWI) (Sports hall)	Badminton club (NWI) (Sports hall)	Volleyball club (MDE) (Gym)	Volleyball club (MDE) (Gym)	Volleyball club (MDE) (Gym)
Tuesday	Boys football (SRI) (Field)	Boys football (SRI) (Field)	Badminton club (NWI) (Sports hall) Boys Football (SRI) (field)	Badminton club (NWI) (Sports hall)	Badminton club (NWI) (Sports hall)
Wednesday		Girls Basketball (MDE/MTR) (Sports hall)	Girls Basketball (MDE/MTR) (Sports hall)	Girls Basketball (MDE/MTR) (Sports hall) Boys Football (SRI) (field)	Girls Basketball (MDE/MTR) (Sports hall) Boys Football (SRI) (field)
Thursday	Girls football (MDE) (Field)	Boys Basketball (MBE/SRI) (Sports hall) Girls football (MDE) (Field)	Boys Basketball (MBE/SRI) (Sports hall) Girls football (MDE) (Field) Netball club (MTR) (Courts)	Boys Basketball (MBE/SRI) (Sports hall) Girls football (MDE) (Field) Netball club (MTR) (Courts)	Boys Basketball (MBE/SRI) (Sports hall) Girls football (MDE) (Field) Netball club (MTR) (Courts)
Friday	Girls Netball (MDE/MTR) (Sports hall)	Girls Netball (MDE/MTR) (Sports hall)		GCSE/A-Level PE Intervention (E5)	GCSE/A-Level PE Intervention (E5)

Please note. Lunchtime clubs run from 12.10pm-12.50pm. Pupils must bring a packed lunch to eat in the PE department prior to the club and change into their Hagley PE kit to take part. Please change and leave promptly, in order to start lesson 3 on time!

Afterschool Sports Clubs & Fixtures

	Year 7	Year 8	Year 9	Year 10	Year 11
Monday				U16 girls' basketball matches (MDE) (Sports hall)	U16 girls' basketball matches (MDE) (Sports hall)
Tuesday	Girls' central venue football @Leasowes (MDE)	Boys Basketball Match (SRI)	Boys Basketball Match (SRI)		
Wednesday		U14 girls' basketball matches (Sports hall) (MTR/MDE)	U14 girls' basketball matches (Sports hall) (MTR/MDE)		
Thursday			Volleyball club (SRI)	Volleyball club (SRI)	Volleyball club (SRI)
Friday					