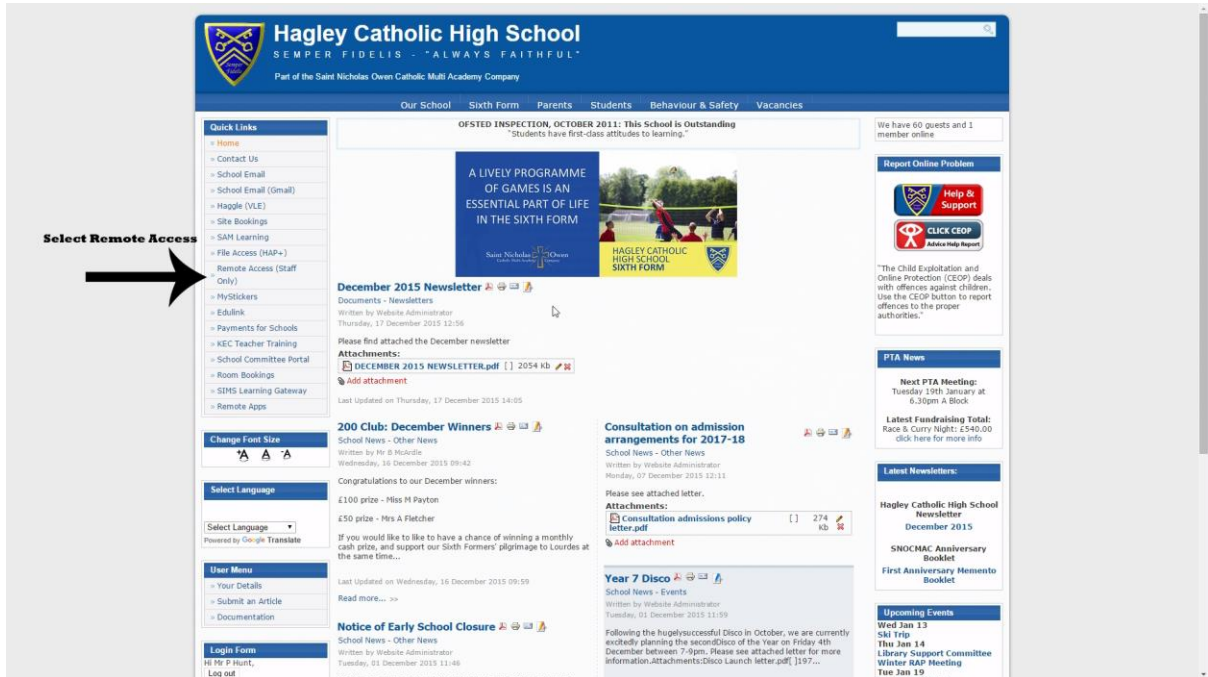


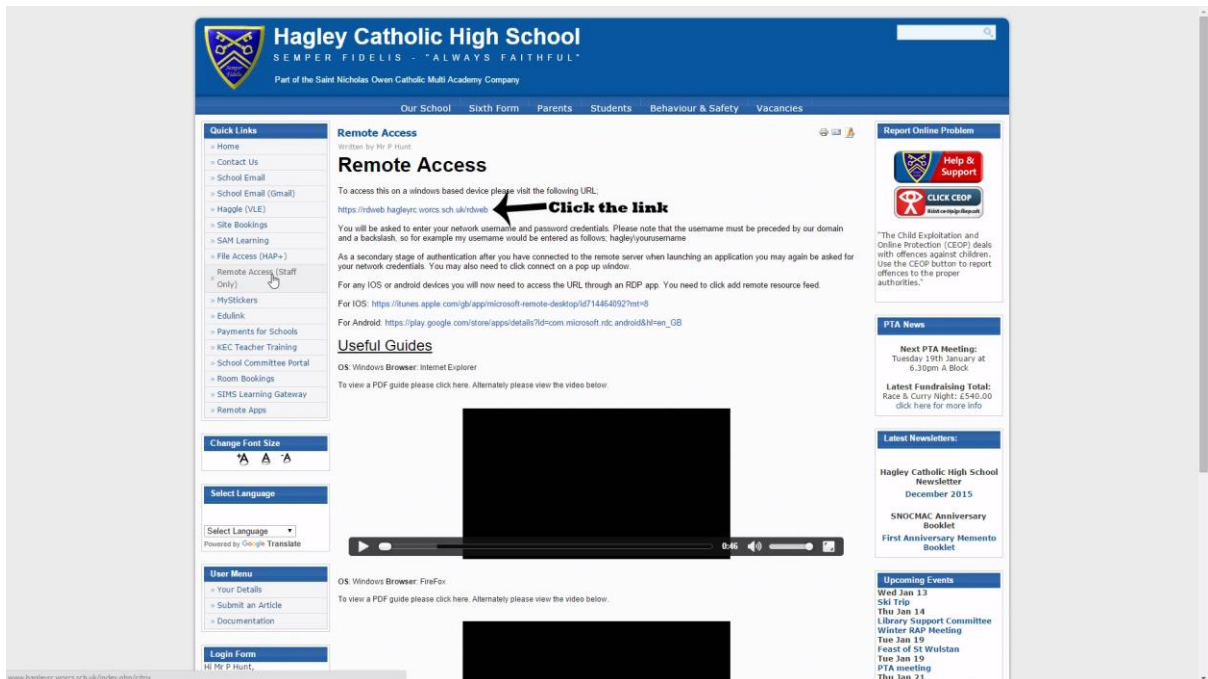


# Remote Access: Mozilla Firefox

Navigate to the school website and on the right hand side you will see a link "Remote Access (Staff Only)"



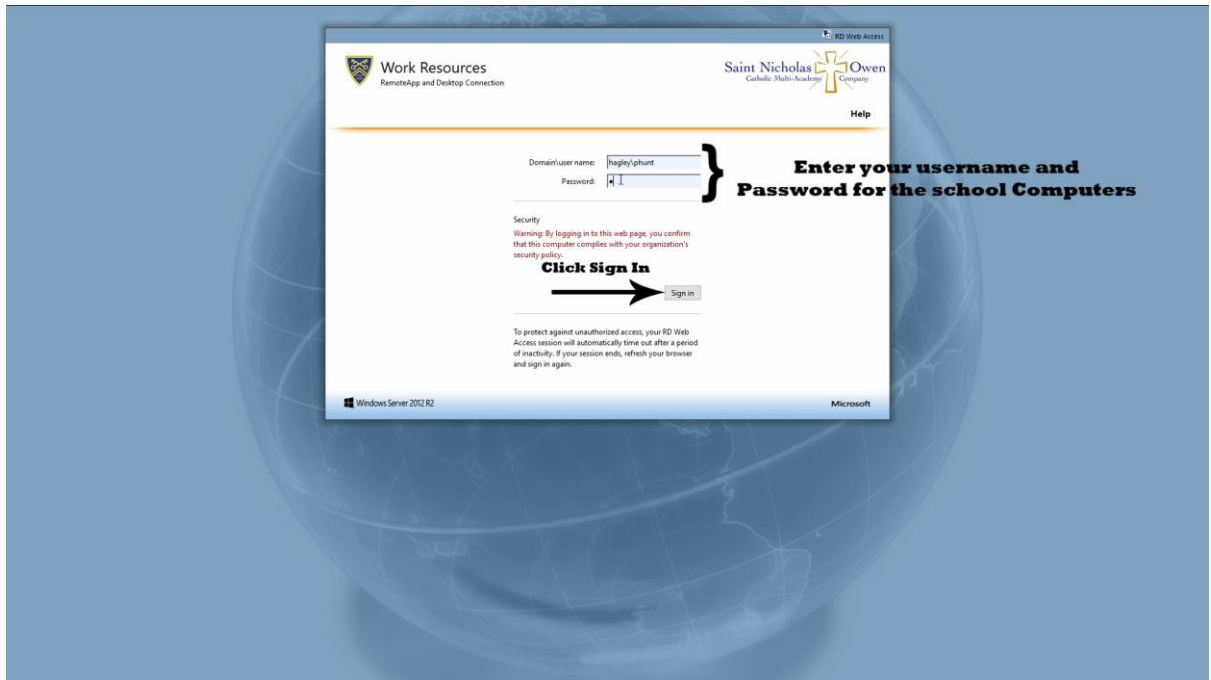
This will then take you to the below page on that page click on the link.



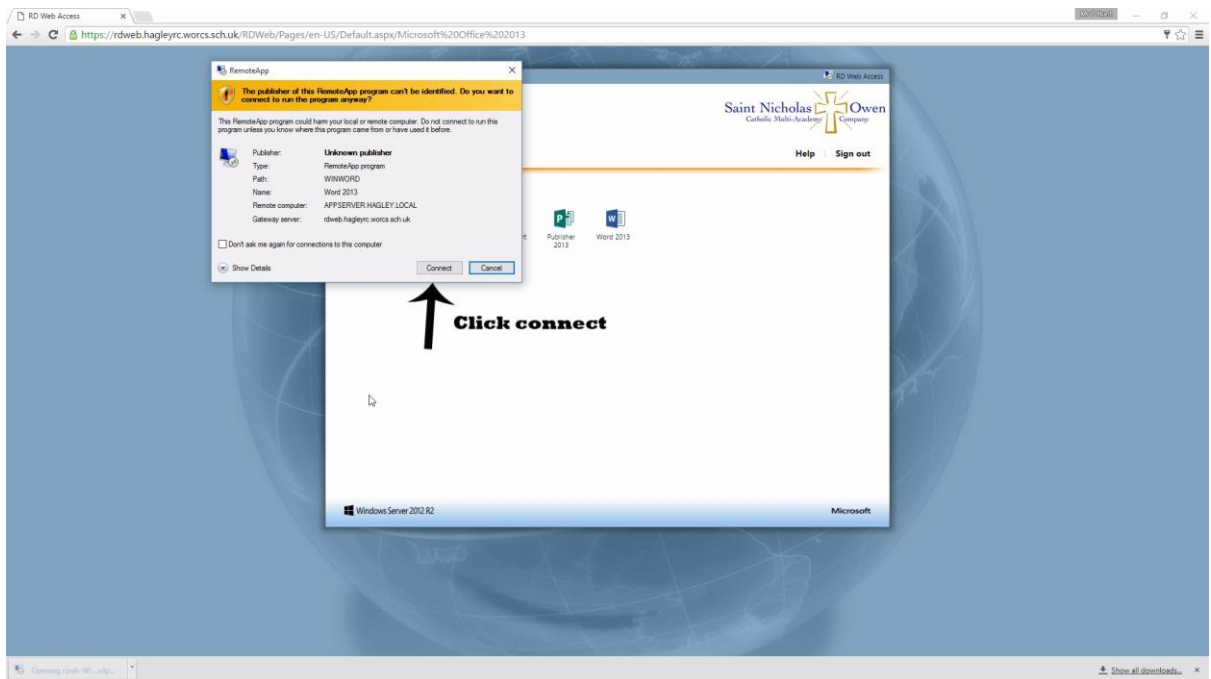


# Remote Access: Mozilla Firefox

This will then take you to a website asking for your username and password. Here you will need to enter your credentials for the school computers preceded by hagley\ as per the example below. Then simply click sign in.



Select the program you wish to use. This will open a pop up, simply press on the connect button.



# Remote Access: Mozilla Firefox

You will then be asked to authenticate yourself again using your school credentials. Once this has been done you can simply use the app as if you are in the school.

